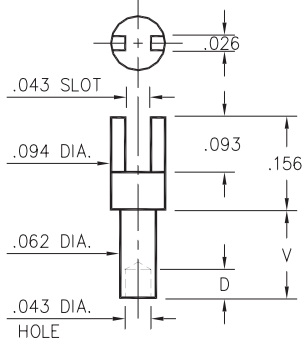


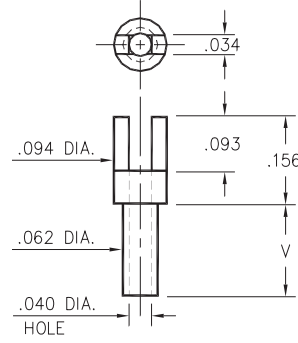
### 2315



**2315-X-01-XX-00-00-07-0**  
Swage mount in .067 hole

- X -	Board Thickness	Length V	Depth D
1	.031	.045	.040
2	.062	.094	
3	.094	.125	.062
4	.125	.156	

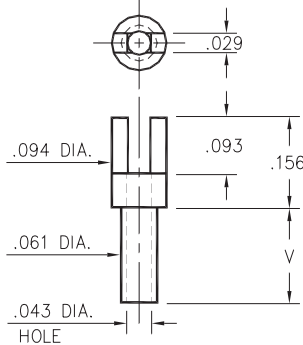
### 2302



**2302-X-01-XX-00-00-07-0**  
Swage mount in .067 hole.

- X -	Board Thickness	Length V
1	.031	.053
2	.062	.084
3	.094	.115
4	.125	.147

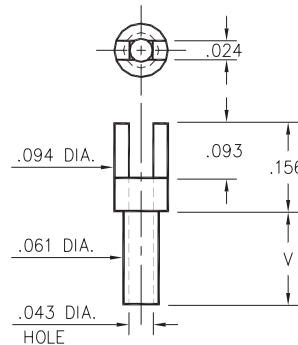
### 2352



**2352-X-01-XX-00-00-07-0**  
Swage mount in .067 hole

- X -	Board Thickness	Length V
1	.031	.045
2	.062	.094
3	.094	.125
4	.125	.156

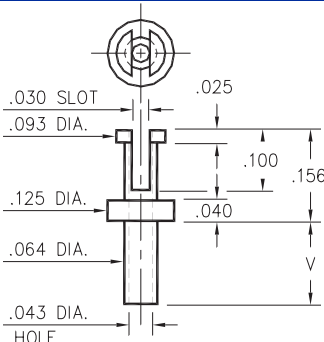
### 2362



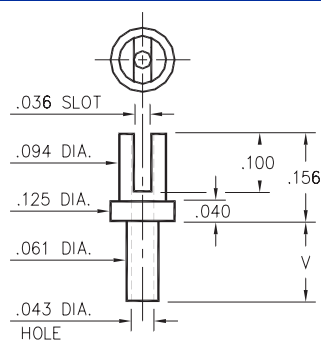
**2362-X-01-XX-00-00-07-0**  
Swage mount in .067 hole

- X -	Board Thickness	Length V
5	.016	.037
1	.031	.053
2	.062	.084
3	.094	.115
4	.125	.147

### 2507/2526



**2507-X-01-XX-00-00-07-0**  
Swage mount in .067 hole



**2526-X-01-XX-00-00-07-0**  
Swage mount in .064 hole

- X -	Board Thickness	Length V
1	.031	.053
2	.062	.084
3	.094	.115
4	.125	.147

#### SPECIFICATIONS

**PIN MATERIAL:**  
Brass Alloy 360, 1/2 Hard  
Swage pins are annealed

**DIMENSION IN INCHES**  
**TOLERANCES ON:**  
LENGTHS: ±.005  
DIAMETERS: ±.002  
ANGLES: ± 2°

**ORDER CODE: 2XXX - X - 01 - XX - 00 - 00 - 07 - 0**

**BASIC PART #**

**SPECIFY PIN FINISH:**  
**01** 200µ" TIN/LEAD OVER NICKEL  
**80** 200µ" TIN OVER NICKEL ◊  
**44** 300µ" SILVER OVER COPPER ◊  
**50** 300µ" ELECTRO-SOLDER  
(60/40 SnPb)

